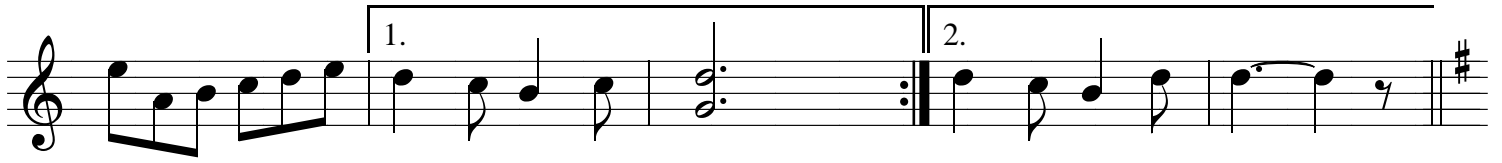
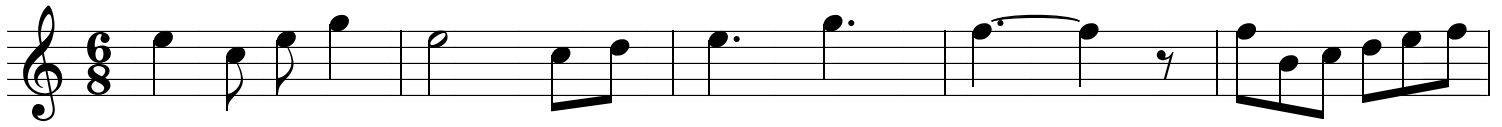
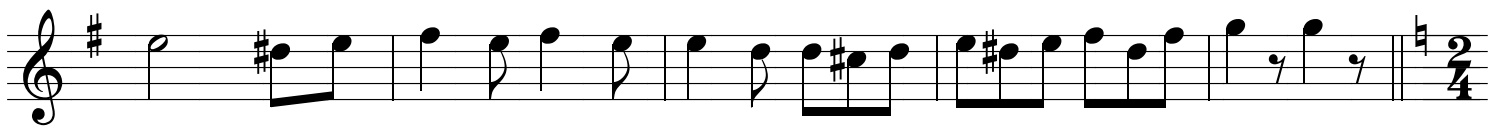
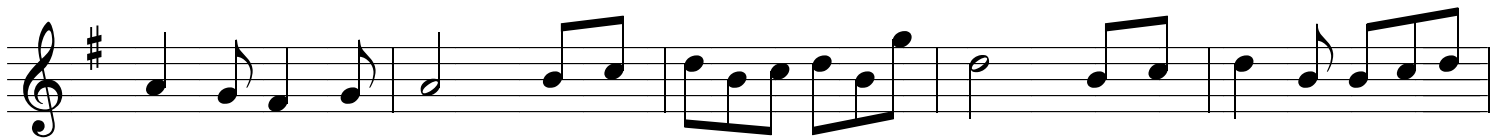


Traditionnel

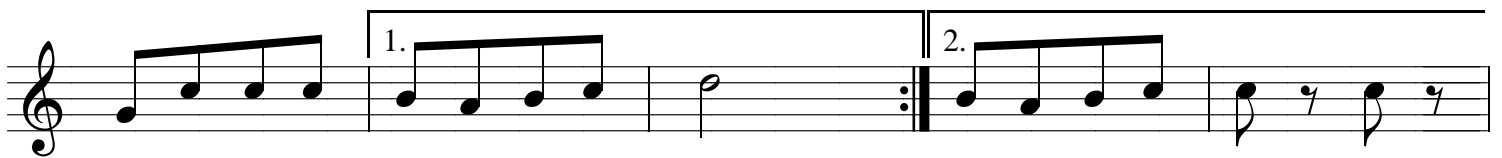
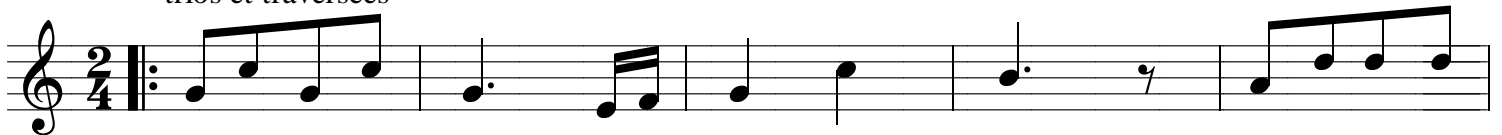
♩. = 114 la forteresse



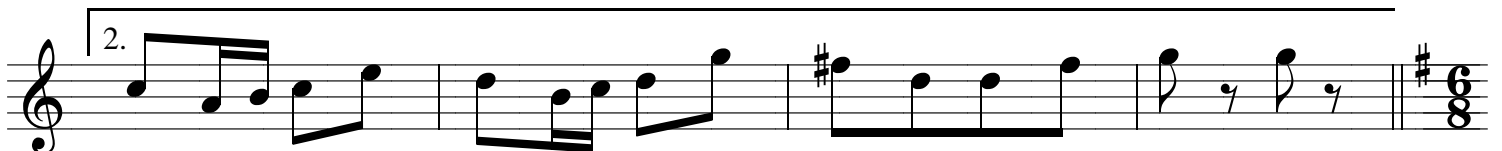
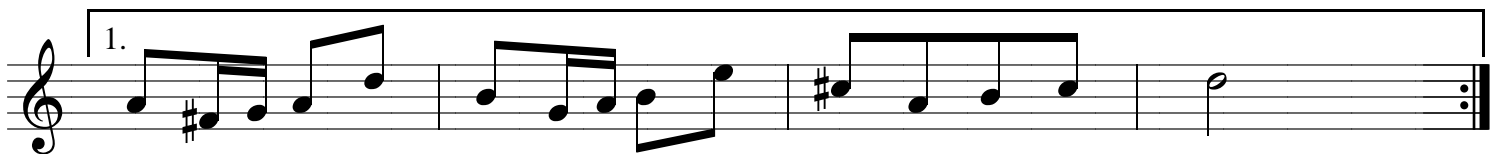
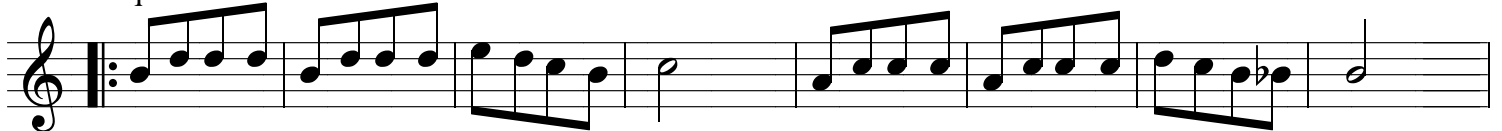
prenez les dames



trios et traversées



quadrilles et tours de mains



## ronds et moulinets

Musical notation for 'ronds et moulinets' in G major, 6/8 time. The piece consists of three staves of music. The first staff begins with a treble clef, a key signature of one sharp (F#), and a 6/8 time signature. The melody is composed of eighth and quarter notes, with some dotted rhythms. The second and third staves continue the melodic line, featuring various rhythmic patterns and rests.

## queue du chat et chaine anglaise

Musical notation for 'queue du chat et chaine anglaise' in G major, 2/4 time. The piece consists of two staves. The first staff starts with a treble clef, a key signature of one sharp (F#), and a 2/4 time signature. It features a series of eighth and quarter notes. The second staff continues the melody, including a first ending (marked '1.') and a second ending (marked '2.'). The piece concludes with a 2/4 time signature.

## le labyrinthe et les prisonniers

Musical notation for 'le labyrinthe et les prisonniers' in G major, 2/4 time. The piece consists of five staves. The first staff begins with a treble clef, a key signature of one sharp (F#), and a 2/4 time signature. The melody is primarily composed of eighth and quarter notes. The second and third staves continue the melodic line. The fourth staff features a series of eighth notes and quarter notes. The fifth staff concludes the piece with a 6/8 time signature.

el doudou

arceaux

promenade et tourniquets

To Coda

⊕ Coda